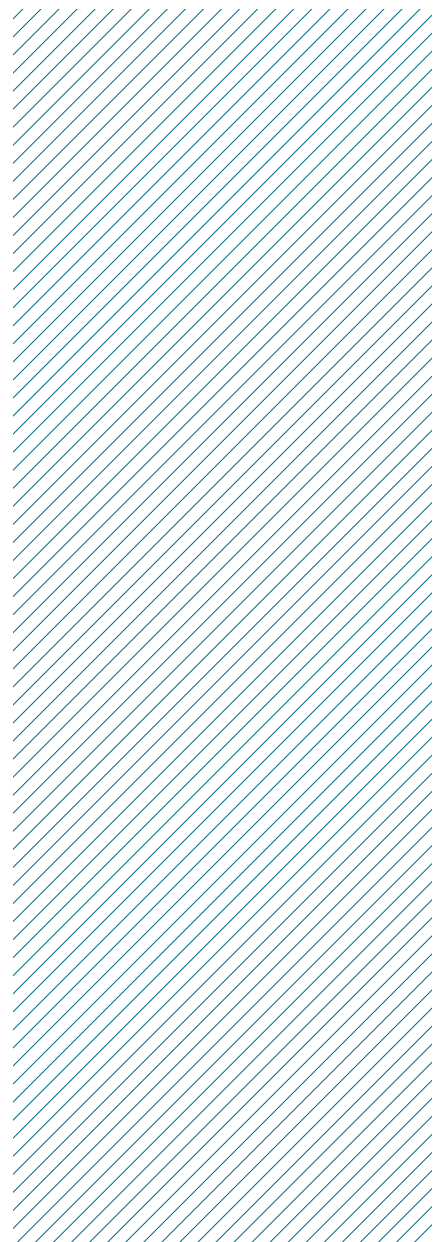
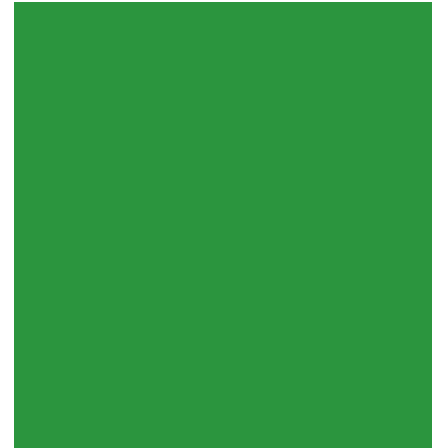


White Paper

# Accuracy of co-registration of planning images with Cone Beam CT images



# Introduction

Leksell Gamma Knife<sup>®</sup> Icon<sup>™</sup> with integrated Cone Beam CT (CBCT) system provides increased workflow flexibility with, e.g., planning on frameless images and subsequent frameless dose delivery. The stereotactic reference is given by the CBCT images taken prior to treatment. Co-registration of the planning image volume with the CBCT volume gives the transformation mapping of the planned isocenter positions to stereotactic coordinates.

The accuracy of co-registration depends on mutual information, implying that deteriorating effects—scatter and noise in the CBCT images—may affect the accuracy of the co-registration. Co-registration accuracy is also dependent on parameters in the reconstruction algorithm, as well as specific co-registration parameters. It is important to quantify the uncertainty and to optimize relevant parameters in the algorithms to ensure that high positional accuracy is maintained in frameless radiosurgery workflows.

## Materials and methods

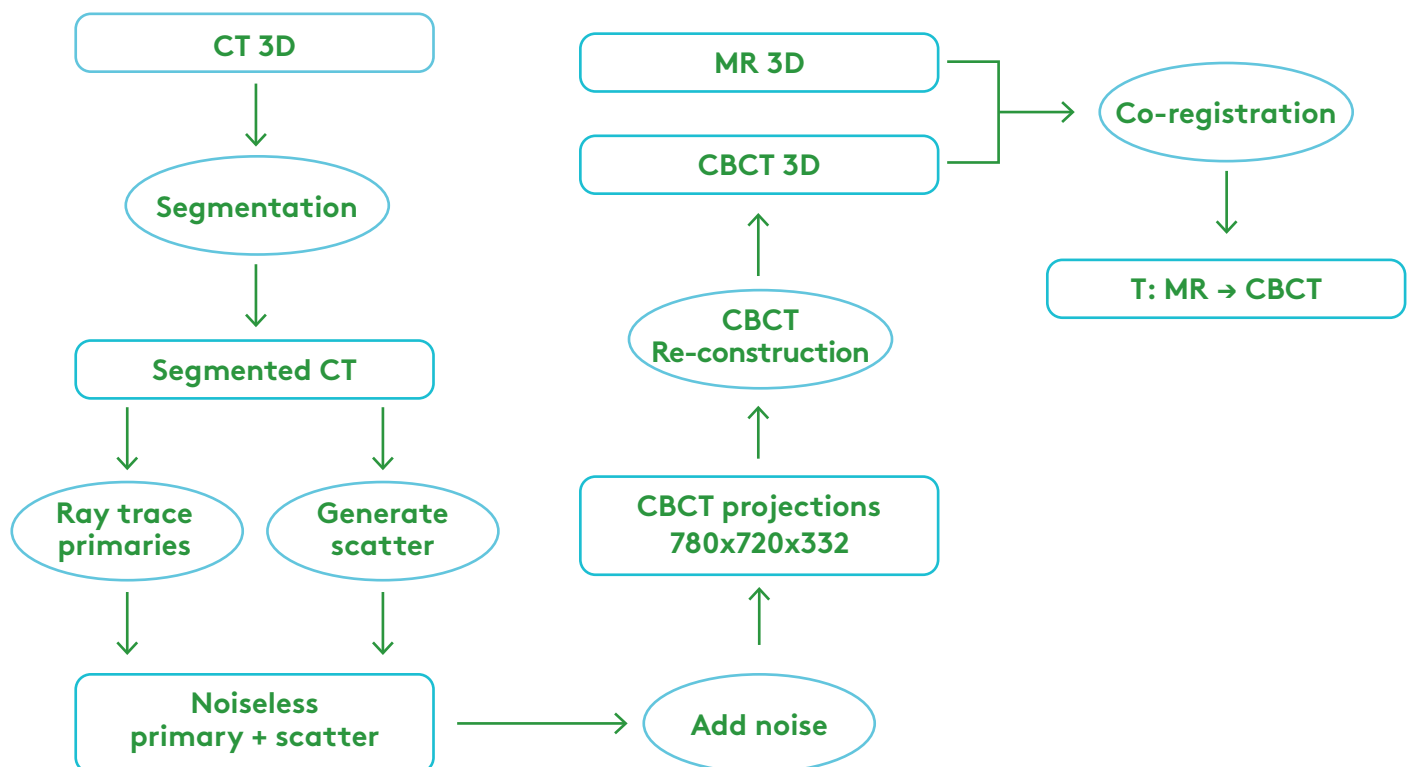
To estimate the co-registration accuracy, existing MR and CT images of a large set of patients have been used. Based on the CT images, CBCT images have been synthetically generated. To do this, the CBCT system and the physical processes relevant to creating the projections must be accurately modeled. Only CTs covering the entire head and with as little artifacts as possible (streaks, beam hardening) are used to avoid introducing non-physical errors. The workflow of generating synthetic images is shown in Figure 1.

The first step is to apply a simple threshold algorithm to segment the CT volume into air, soft tissue and bone based on the Hounsfield values.

For a large set of energies the total attenuation is calculated for every voxel in the segmented volume. This information is needed in the ray-tracing step.

In the second step the photons from the x-ray source are ray-traced through the segmented volume to the pixels of the detector for every projection. The spectral shaping effects of the bowtie filter are included, as well as the detailed attenuation information of the segmented volume. The effect from scattering in the patient is Monte Carlo simulated in much fewer projection angles and tallied in larger pixels than in the actual detector. Using a method developed by G. Bootsma at Princess Margaret Hospital<sup>1</sup> the scatter is subsequently filtered and upsampled to the resolution of the detector and to all projections.

The third step is to add Poisson noise to every projection. Noise is proportional to one over the square root of mAs and depends on the intensity value at each pixel of the detector. It is assumed that the intensity is proportional to the energy fluence.



**Figure 1.** Workflow for generating synthetic images

After being generated, the projection images are reconstructed and the reconstructed volume is co-registered with MR images of the same patient using Leksell GammaPlan® rigid co-registration implementation.

The registration uses Normalized Mutual Information (NMI)<sup>2</sup> to estimate the level of correspondence between two images given a registration transformation, and a numerical optimizer based upon Simulated Annealing to find the best such transformation.<sup>3</sup> The NMI is computed using histogramming and a stochastic sampling of the image intensities using linear Partial Volume Interpolation.<sup>4</sup> The most crucial parameter for the registration is the number of sample points used to compute the normalized mutual information. MRI images seem to require a large number of samples to reduce the variability in the Mutual Information measure. This is likely because of the geometric distortions typically present in MRI images. To reduce the uncertainties, a refinement-step has been added which fine-tunes the result using a much larger number of samples.

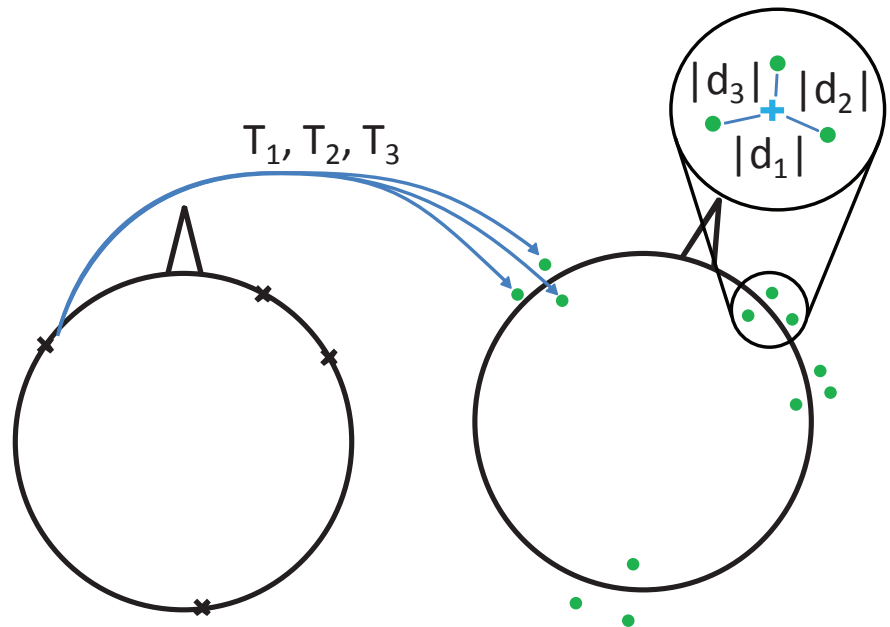
To numerically assess the uncertainties in the registration without knowing the correct transformation with sufficient accuracy, the estimated mean Target Registration Error (TRE) has been used. The target points are randomly selected within a sphere approximating the head. The mean TRE is the mean distance between the registered position of each target point and the average registration position of that point (see Figure 2).

---

**Experiments on other images with known transformation have confirmed systematic errors to be negligible.**

---

**Figure 2.**  
The estimated mean Target Registration Error (TRE) is the mean distance from all transformed points to the mean positions over all transformations and all target points



## Results

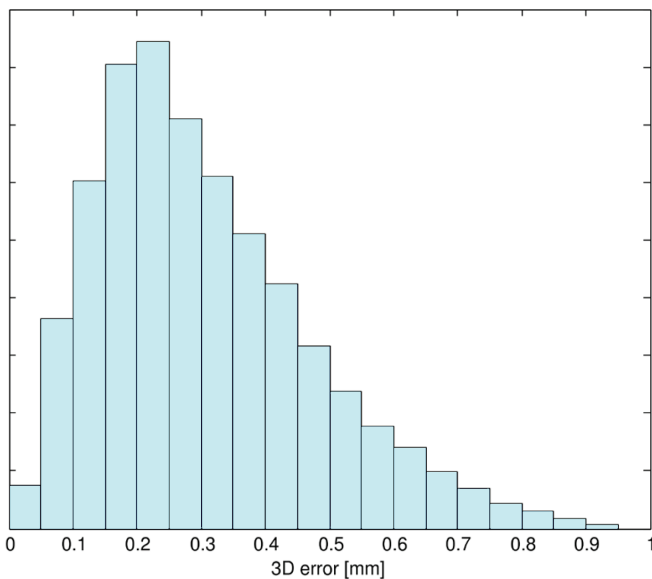
The mean TRE appears fairly constant for CBCT-MRI registration of different patients, around 0.3 mm for Patient 1–4 which all have an MRI resolution of 1 mm<sup>3</sup> (see Table 1 which also contains results for corresponding MR-CT registrations). Patient 5 has a higher TRE which seems to correspond with the 50% larger slice distance for this patient. In Figure 3, histogram of the 3D positional errors for a large number of target points and registrations is shown for patient 1. As is shown there will be positions that have a significant larger positional error than the mean error. However, the large errors generally occur far from the center of the head and a substantial part of the head will have much lower positional error as shown in Figure 4. Here, the errors are transformed to the original MR image.

Another finding of CBCT-MR co-registration is that the accuracy is in generally submillimetric, but the accuracy is less than for CT-MR registration. This is likely due to the effect of scatter that deteriorates CBCT images but is not present in CT images. However, adding the refinement step makes the CBCT-MR registration as accurate as the CT-MR registration without this step. CBCT-CBCT registration which has relevance for fractionated treatment is very accurate.

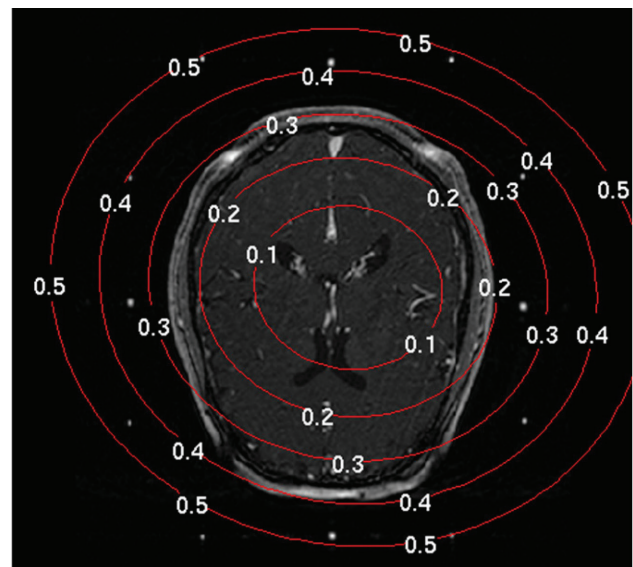
As for physical parameters, the analysis shows that the accuracy is only slightly improved for mAs/projection exceeding 0.4. Moreover, tests performed at different kVps show that the accuracy is approximately the same in the 80–100 kVp range, assuming the equivalent dose being deposited in the patient. Finally, applying different filter types and crop frequencies has little effect on the accuracy.

Patient	Estimated TRE (std dev) [mm]	
	CBCT-MR	CT-MR
Patient 1 (1 mm resolution)	0.35 (0.01)	0.16 (0.006)
Patient 2	0.33 (0.01)	0.19 (0.007)
Patient 3	0.31 (0.01)	0.17 (0.006)
Patient 4	0.34 (0.01)	0.16 (0.006)
Patient 5 (1.5 mm slice dist.)	0.54 (0.02)	0.26 (0.01)
Typical CBCT-CBCT/CT < 0.1 mm		

**Table 1.** Co-registration results for 5 different patients



**Figure 3.** Histogram over 3D errors at different positions in the head for patient 1



**Figure 4.** Euclidean norm of standard deviation (mm) in transformed target coordinates CBCT-MRI registration of patient 1

---

## Conclusions

Co-registration and reconstruction parameters have been optimized to minimize positional uncertainty. It is thus feasible to co-register MR and CBCT images with small uncertainties (in general submillimeters) in isocenter positions.

---



---

## References

1. Bootsma GJ. Physics and Computational Methods for X-ray Scatter Estimation and Correction in Cone-Beam Computed Tomography. University of Toronto, 2013 thesis.
2. Studholme DL, Hill DLG, Hawkes DJ. An overlap invariant entropy measure of 3D medical image alignment. *Pattern Recognit.* 1999; 32(1):71–86.
3. Press WH, et al. *Numerical Recipes in C: The Art of Scientific Computing*. 2nd edition. Cambridge University Press; 1992: chapter 10.9.
4. Maes F, et al. Multi-modality image registration by maximization of mutual information. *IEEE Trans Med Imag.* 1997;16:187–98.



For almost five decades, Elekta has been a leader in precision radiation medicine.

Our more than 4,000 employees worldwide are committed to ensuring everyone in the world with cancer has access to—and benefits from—more precise, personalized radiotherapy treatments.

## Elekta Offices

---

### Elekta AB

Box 7593  
SE-103 93  
Stockholm, Sweden

T +46 8 587 254 00

F +46 8 587 255 00

### Europe

T +46 8 587 254 00

F +46 8 587 255 00

### Turkey, India, Middle East & Africa

T +90 216 474 3500

F +90 216 474 3406

### North & Central America including the Caribbean

T +1 770 300 9725

F +1 770 448 6338

### South America & Cuba

T +55 11 5054 4550

F +55 11 5054 4568

### Asia Pacific

T +852 2891 2208

F +852 2575 7133

### Japan

T +81 3 6722 3800

F +81 3 6436 4231

### China

T +86 10 5669 2800

F +86 10 5669 2900



[elekta.com](https://www.elekta.com)



[/elekta](https://www.facebook.com/elekta)



[@elekta](https://twitter.com/elekta)



[/company/  
elekta](https://www.linkedin.com/company/elekta)

